

**Description & Features:**

- Extremely robust and stable long-term
- Shock and vibration resistant
- $\pm 0.5\%$  FSO accuracy
- 15,000 psi nominal pressure range
- Permissible overpressure up to 22,500 psi
- Standard 80% shunt calibration
- Eight gauge sensor design
- 5 year warranty

**Applications:**

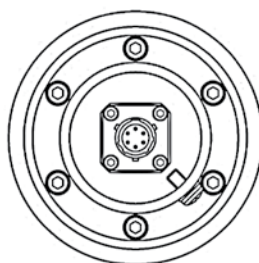
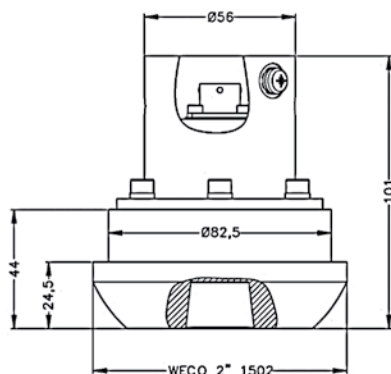
- Designed to be used with WECO® 1502 style union fittings for high pressure/harsh oil well environments like fracturing, cementing, acidizing and mud pressure management

**Specifications**

<b>Electrical Output Signal</b>	2-wire: 4-20 mA / $V_s=10-30$ Vdc
<b>Electrical Connection</b>	MIL-/ Bendix 6-pin
<b>Housing</b>	316L SS
<b>Pressure Port/Diaphragm</b>	316L SS
<b>Normal Operating Temperature Range</b>	-40°F to 257°F (-40°C to 125°C)
<b>Compensated Temperature Range</b>	23°F to 140°F (-5°C to 60°C)
<b>Temperature Effect on Zero/Span</b>	Less than $\pm 2\%$ FSO / 100K
<b>Accuracy</b>	$\pm 0.5\%$ FSO
<b>Stability</b>	Shock: 500 g / 1 msec
<b>Enclosure Rating</b>	IP67

**Order Codes**

Range	Permissible Over-pressure	Code
15,000 psi	22,500 psi	LOH425



Note: Measurements are in mm.

WECO® is a registered trademark of FMC Technologies

**Wiring Diagram**